

1ST FENNOSCANDIAN DENDROECOLOGICAL FIELDWEEK

LÖVÅSGÅRDEN, GRÖVELSJÖN, SWEDEN

JUNE 11-17, 2001

ORGANIZERS

Mats Niklasson, SLU, Sweden
Maarit Kalela-Brundin, Museum of Forestry,
Sweden
Rune Groven, NLH, Norway

TIME AND LOCATION

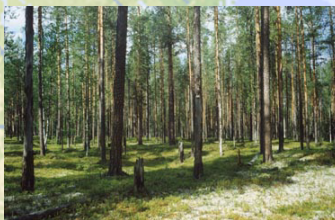
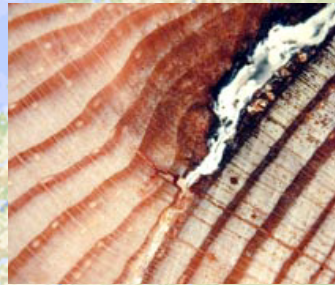
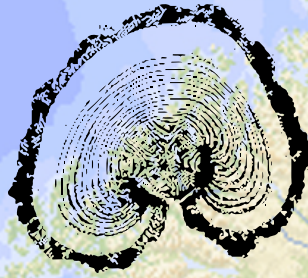
June 11-17, 2001. The course will be held in Grovelsjon, in the northern part of Dalarna province of Sweden. Here we find almost pristine pine and spruce forests that are close to the tree-line. The area provides excellent possibilities for most kinds of tree-ring related research due to the presence of many old trees and relatively abundant dead wood.

BACKGROUND

The use of tree-rings is strongly increasing in many fields of science, especially in ecology. Disturbance history, climate reconstruction and analysis of human impact on forest ecosystems are areas where precisely dated tree-ring chronologies can add new and unique ecological information. Compared to North America, tree-ring related research is still in the early stages in Fennoscandia, implying there is a great potential to contribute to science - not only to ecology but also to geography, archaeology, geomorphology, cultural history, anthropology and many others. With this course we would like to broaden the perspectives and thereby being the starting point for a wider use of tree-ring based methods for the participants.

CREDITS

It is possible to obtain 2 or 3 credits by making a literature course after the fieldweek, related to the subject chosen.



TARGET GROUP

This first year, the course is intended mainly for Ph.D. students from Nordic countries, with a limited number of participants from other countries. **The maximum number of students is 20 this year.** We expect students mainly from biology, forestry, archaeology, geography, geology and related subjects.

MAJOR TOPICS

Dendroclimatological reconstructions;
fire history, disturbance dynamics, stand reconstructions,
human influence in forest landscapes; dating traces of human activities;
lab and field techniques of dendrochronology and dendroecology,
cross-dating and developing of chronologies

COST

Course fee and lodging will be paid for by NOVA. We cannot refund your travel expenses so we recommend you to apply for funding for travel in advance.

REGISTRATION DEADLINE

Deadline for the registration - March the 1st, 2000. You can also register on-line at <http://www.planteco.lu.se/skog/Igor/dw-main.html>, but you must supply us with your CV. If the number of applicants exceed 20, we will make a selection based on national quotas and the relevance of the course for your own research. Decision will be taken and announced in the beginning of April 2001.

design and layout © Igor Drobyshch, 2000

REGISTRATION

YOU CAN ALSO REGISTER ON-LINE AT [HTTP://WWW.PLANTECO.LU.SE/SKOG/IGOR/DW-MAIN.HTML](http://www.planteco.lu.se/skog/Igor/dw-main.html)

NAME

INSITUATION

POSITION

ADDRESS

PHONE

FAX

EMAIL

YOUR AREA OF INTEREST

TITLE OF YOUR RESEARCH WORK

AS SOON AS WE RECEIVE YOUR APPLICATION WE WILL SEND A CONFIRMATION NOTE TO YOU

SEND THIS FORM AND YOUR SHORT CV TO:

MATS NIKLASSON
SOUTHERN SWEDISH FOREST RESEARCH CENTRE,
PO BOX 49, SE-230 53 ALNARP, SWEDEN

1ST FENNOSCANDIAN
DENDROECOLOGICAL
FIELDWEEK



LÖVÅSGÅRDEN, GRÖVELSJÖN, SWEDEN
11-17 JUNE 2000